




ARPA

Natural Resource Development Workshop



Our Goals

Participants will :

-  Develop a Basic Understanding of the Natural Resource Development Process
-  Understand Key Legislation
-  Identify Government Agency Jurisdiction

Development of a Natural Resource

Exploration & Evaluation - When is a Mine a Mine?

Feasibility Reporting

Financing

The Production Decision

Construction

Mining

Processing

The Environment - Reclamation



Overview of Major Federal Environmental Laws

- Migratory Bird Treaty Act of 1918
- National Historic Preservation Act of 1966
- National Environmental Policy Act of 1969
- Clean Air Act of 1970 & 1990
- Endangered Species Act 1973
- Safe Drinking Water Act of 1975

Overview of Major Federal Environmental Laws (Continued)

- Federal Land Policy Management Act of 1976
- Resource Conservation and Recovery Act of 1976
- Surface Mining Control and Reclamation Act of 1977
- Clean Water Act of 1977
- Archeological Resources Protection Act of 1979
- Comprehensive Environmental Response, Compensation, and Liability Act of 1980

So What Does That Mean?

- Securing Land Use
- Water Use
- Explosives and Hazardous Materials
- Air Quality
- Water Quality
- Native Plants
- Solid Waste Disposal

So What Does That Mean? (Continued)

- Drinking Water and Waste Water Permits
- Flood Control and Building Codes
- Safety Requirements
- Wildlife
- Cultural Resources
- Taxes and Incorporation

Land Use

- Private
- County
- State
- Federal



- ✓ Forest Service
- ✓ Bureau of Land Management

Drilling and Water Use

● Arizona Department of Water Resources

- ✓ Notice of Intention to Drill
- ✓ Appropriation of Surface Water
- ✓ Withdrawal and Use of Groundwater
- ✓ Construction, Enlargement, Repair, Alteration, or Removal of Dams



● Arizona Department of Environmental Quality

- ✓ Wastewater Reuse Permit
- ✓ Dry Well Registration
- ✓ Injection Wells Used to Extract Minerals

Explosives

- Alcohol, Tobacco and Firearms

- ✓ Explosives

- ADOT, MSHA, ASMI

- ✓ Transportation of Explosives

- ✓ Magazine Construction



Fuel and Oil

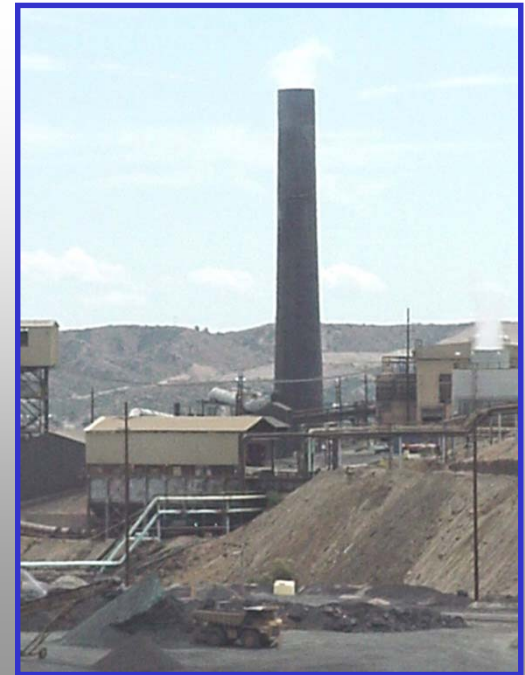
- Arizona State Mine Inspector
 - ✓ Above Ground Fuel Storage Tanks

- Arizona Department of Environmental Quality & Environmental Protection Agency
 - ✓ Used Oil Collection Center
 - ✓ Transporters, Processors/Re-Refiners, Marketers and Burner Licensing and Reporting

Air Quality Control

- Arizona Department of Environmental Quality
 - ✓ Air Quality Control Permit
 - ✓ Asbestos NESHAP Program Inspections

- County Air Quality Permitting
 - ✓ Air Quality Control Permitting
 - ✓ Activity Permits



Water Quality

● Arizona Department of Environmental Quality

- ✓ Aquifer Protection Permit
- ✓ Consistency Review
- ✓ Clean Water Act

● Environmental Protection Agency

- ✓ 402 Permit - NPDES (Storm Water)

● U.S. Army Corps of Engineers

- ✓ 404 Permit - “Dredge and Fill”
- ✓ Section 10 Permit - Rivers and Harbors Act



Native Plants

- Arizona Department of Agriculture
 - ✓ Notice of Intent to Clear



Hazardous Materials

- Arizona Department of Environmental Quality
 - ✓ Hazardous Waste Permit
 - ✓ Notification of Regulated Waste Activity EPA form
 - ✓ Pollution Prevention Plan
 - ✓ Application for acceptance into the Voluntary Program
 - ✓ Register as a Hazardous Waste Management Facility
 - ✓ TRI Reporting - AZ Emergency Response Commission
 - ✓ Toxic Data Report
 - ✓ Special Waste Annual Report



Solid Waste Materials

- Arizona Department of Environmental Quality
 - ✓ Solid Waste or Special Waste Facility Plan or Aquifer Protection Permit
 - ✓ Solid Waste Notification
 - ✓ Notice of Commencement

Drinking and Waste Water Permits

- Arizona Department of Environmental Quality
 - ✓ Approval for Individual On-Site Disposal System
 - ✓ Water and Wastewater Facilities - Approval to Construct - MCDES
 - ✓ Approval to Operate
 - ✓ Drinking Water Permit - PCDES

Flood Control and Building Codes

- Maricopa County Flood Control District and County Planning and Development
 - ✓ Flood Control Permits and Building Codes
 - ✓ Anything out of County Jurisdiction - ASMI



Mine Health and Safety

■ Mine Safety and Health Administration & State Mine Inspector & OSHA

- ✓ Notice of Start-up, Move, or Stop for Portable Equipment
- ✓ MSHA Forms



Wildlife

- Arizona Game and Fish Department & U.S. Fish and Wildlife Service
 - ✓ Agency acts as a consultant - Environmental Impact Statements Must be Filed



Cultural Resources

- Arizona State Museum, Arizona State Land Department Cultural Resources Manager, and Arizona State Historic Preservation Officer-State Parks (Private)
 - ✓ Arizona Antiquities Act Permit
- Bureau of Land Management & U.S.D.A. Forest Service (Federal)
 - ✓ Cultural Resources Use Permit



Taxes and Incorporation

- Arizona Department of Revenue
 - ✓ Transaction Privilege Tax License
- Arizona Corporation Commission
 - ✓ Authority and Articles of Incorporation



Reclamation

- Arizona State Mine Inspector
 - ✓ Reclamation Statutes and Rules
- MCFCDD
 - ✓ Reclamation Guidelines



So Far We Have Established.

- Exploration and Economic Feasibility Reports
- Secure Land or Leases
- Submit Applications, Obtain Permits and File Reports
- Addressing Public Issues
- Special Emphasis on Environmental Issues and Permitting
- Mine Planning

This process on average takes...

QUESTIONS



